



A Clinical Investigator's Approach to Promoting Equity in Oncology Research



Karen Winkfield, MD, PhD

Executive Director, Meharry-Vanderbilt Alliance

Ingram Professor of Cancer Research

Professor of Radiation Oncology

Vanderbilt University Medical Center

Professor of Internal Medicine

Meharry Medical College

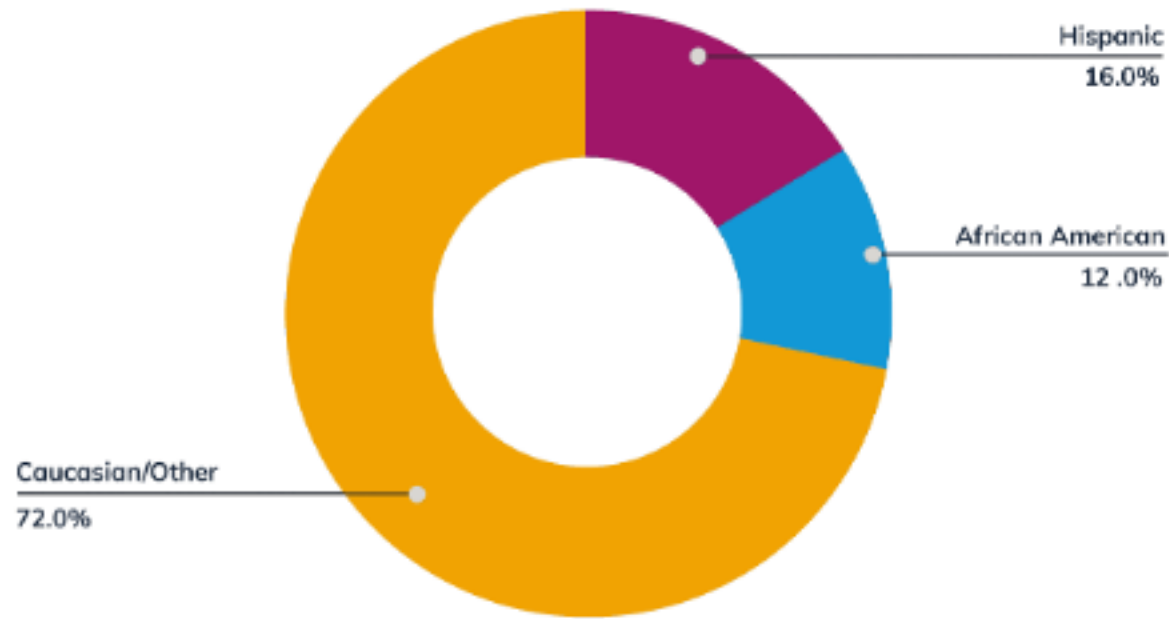
#BeIntentional

D.R.I.V.E. Initiative
Black Paper Summit

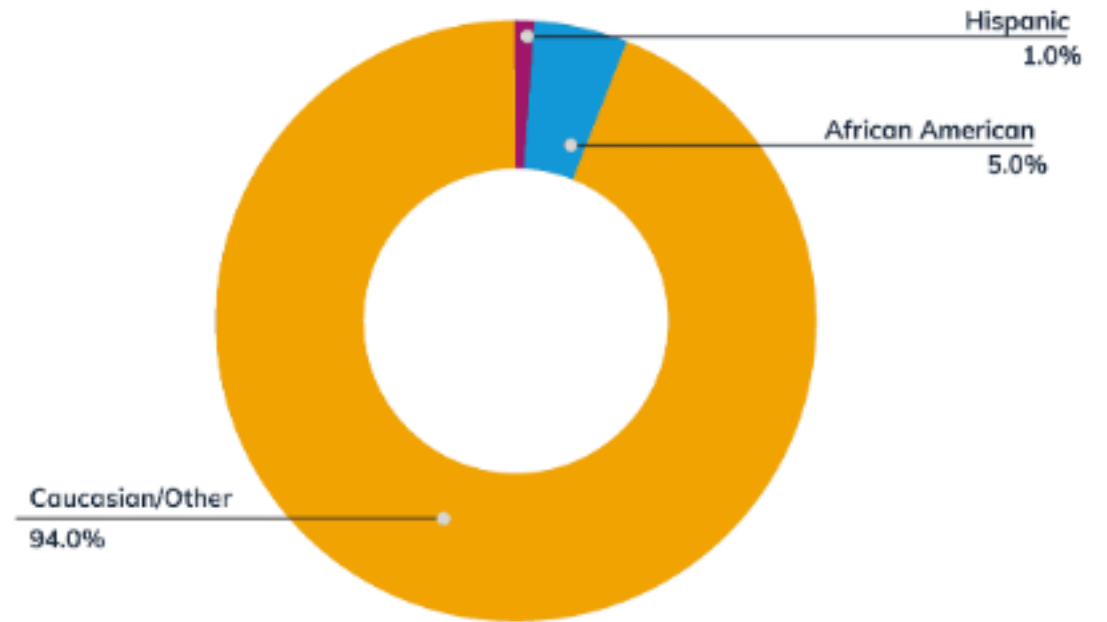
February 23, 2024

Underrepresentation in Clinical Trials

United States Population



Clinical Trial Participants



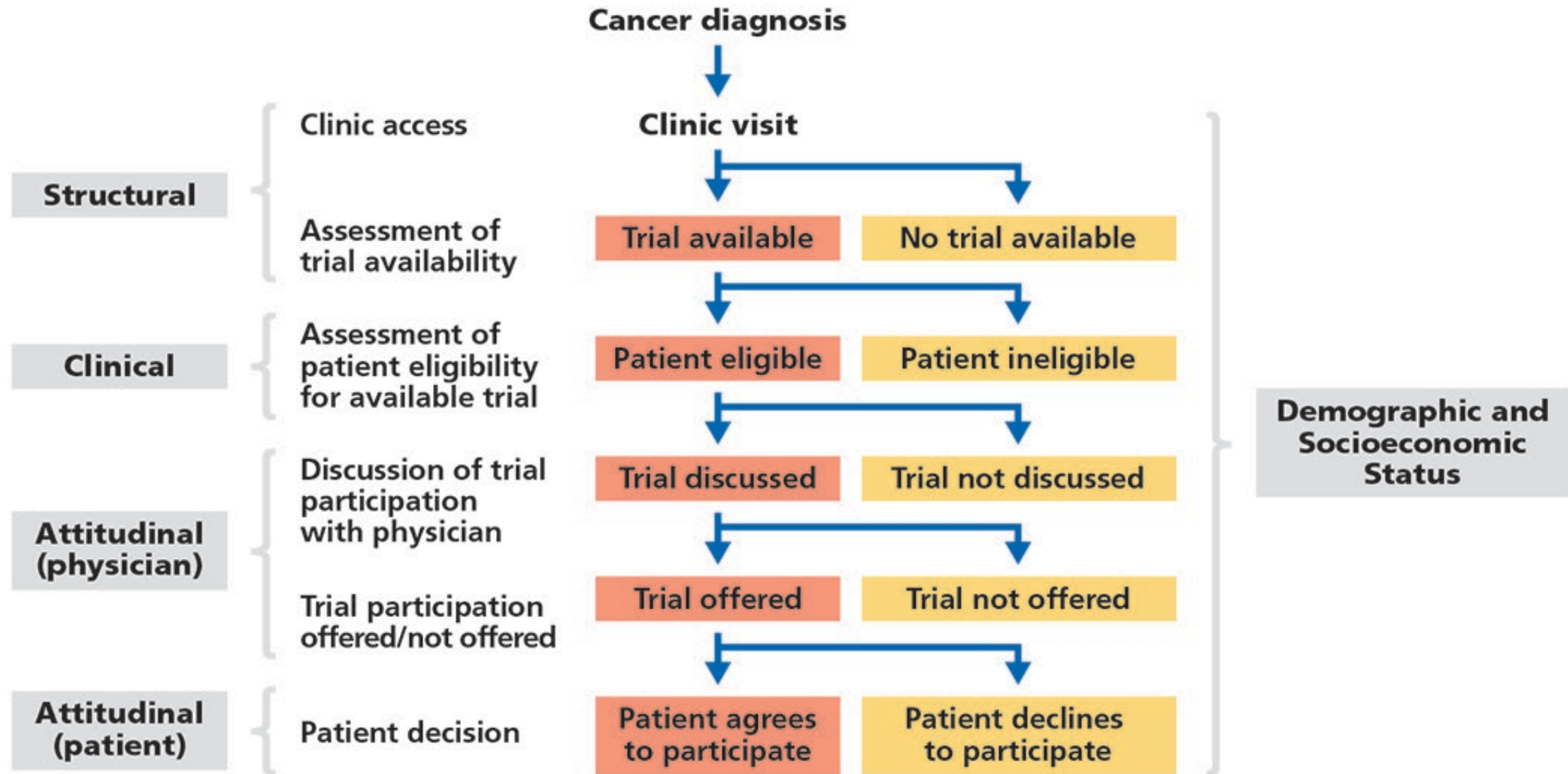
**Sourced from <https://www.sciencedirect.com/science/article/pii/S0146280618301889>*

Why Do Only Eight Percent Of Cancer Patients In The U.S. Participate In Clinical Trials?

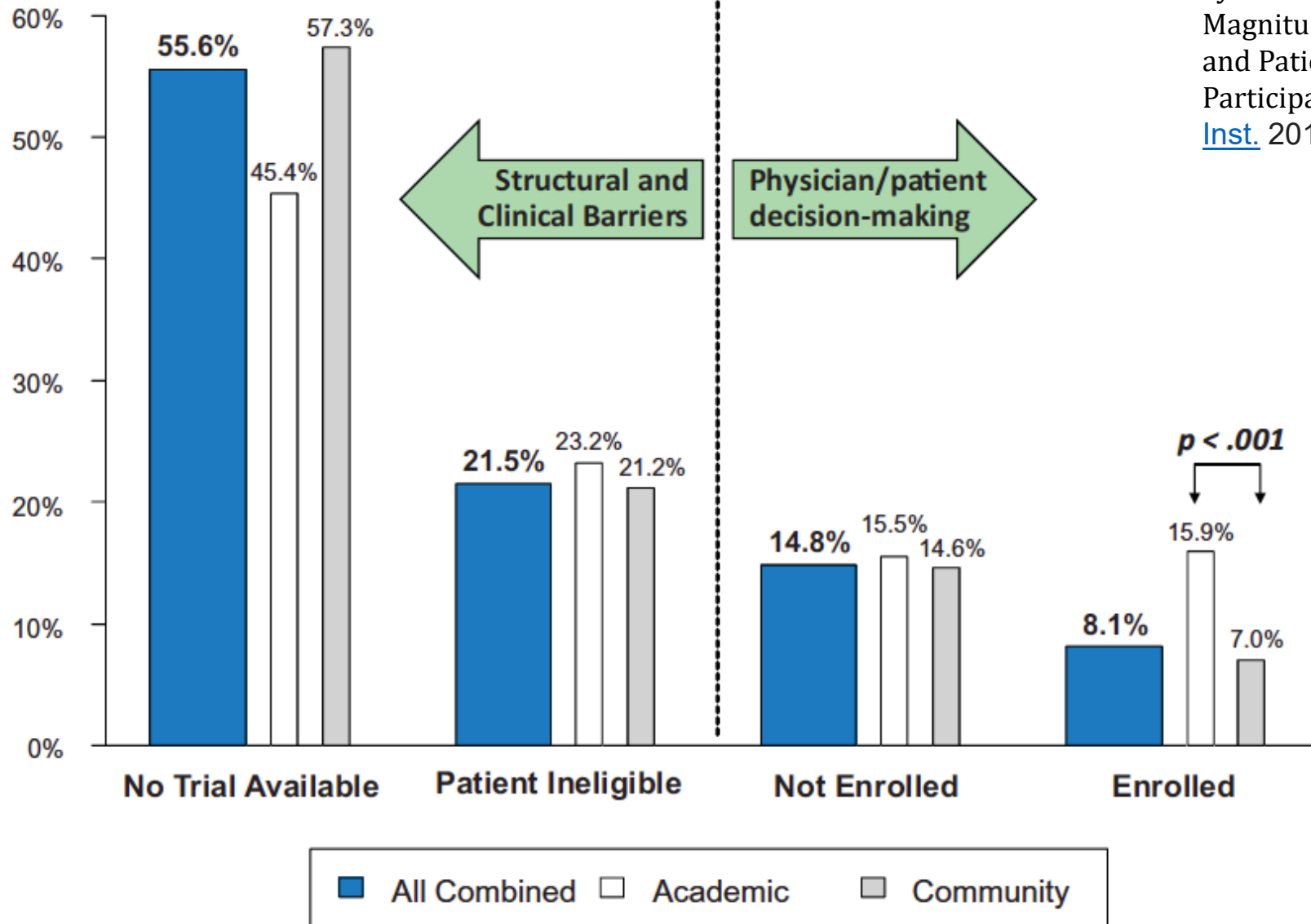
Victoria Forster Contributor ⓘ



MODEL PATHWAY OF TRIAL ENROLLMENT PROCESS



Source: Unger, J. M., Cook, E., Tai, E., & Bleyer, A. (2016). The Role of Clinical Trial Participation in Cancer Research: Barriers, Evidence, and Strategies. *American Society of Clinical Oncology Educational Book*, 36, 185–198. https://doi.org/10.14694/EDBK_156686. Reprinted with permission. © 2016 American Society of Clinical Oncology. All rights reserved.



Systematic Review and Meta-Analysis of the Magnitude of Structural, Clinical, and Physician and Patient Barriers to Cancer Clinical Trial Participation. Unger, et al. [J Natl Cancer Inst.](#) 2019 Mar; 111(3): 245–255

13 studies (nine in academic and four in community settings) with 8883 patients

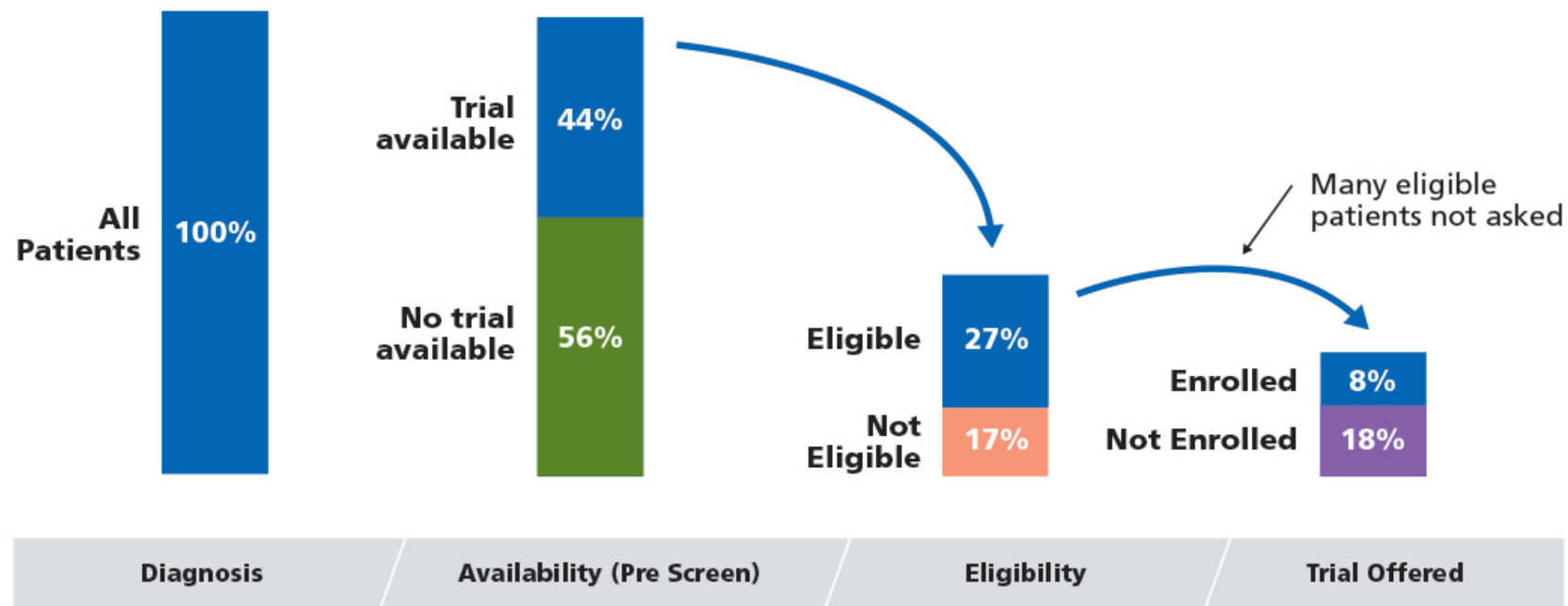
Barriers to Patient Enrollment in Therapeutic Clinical Trials for Cancer

A Landscape Report



CLINICAL TRIAL DECISION-MAKING PATHWAY

Barrier Type	Institution	Trial Design	Provider, Institution, Patient
Considerations	How many and what types of trials are open?	What are the specific eligibility criteria?	Is the patient asked and how? Does the institution have support personnel/resources? How does the patient feel about the trial and do they have practical barriers preventing them from enrolling?

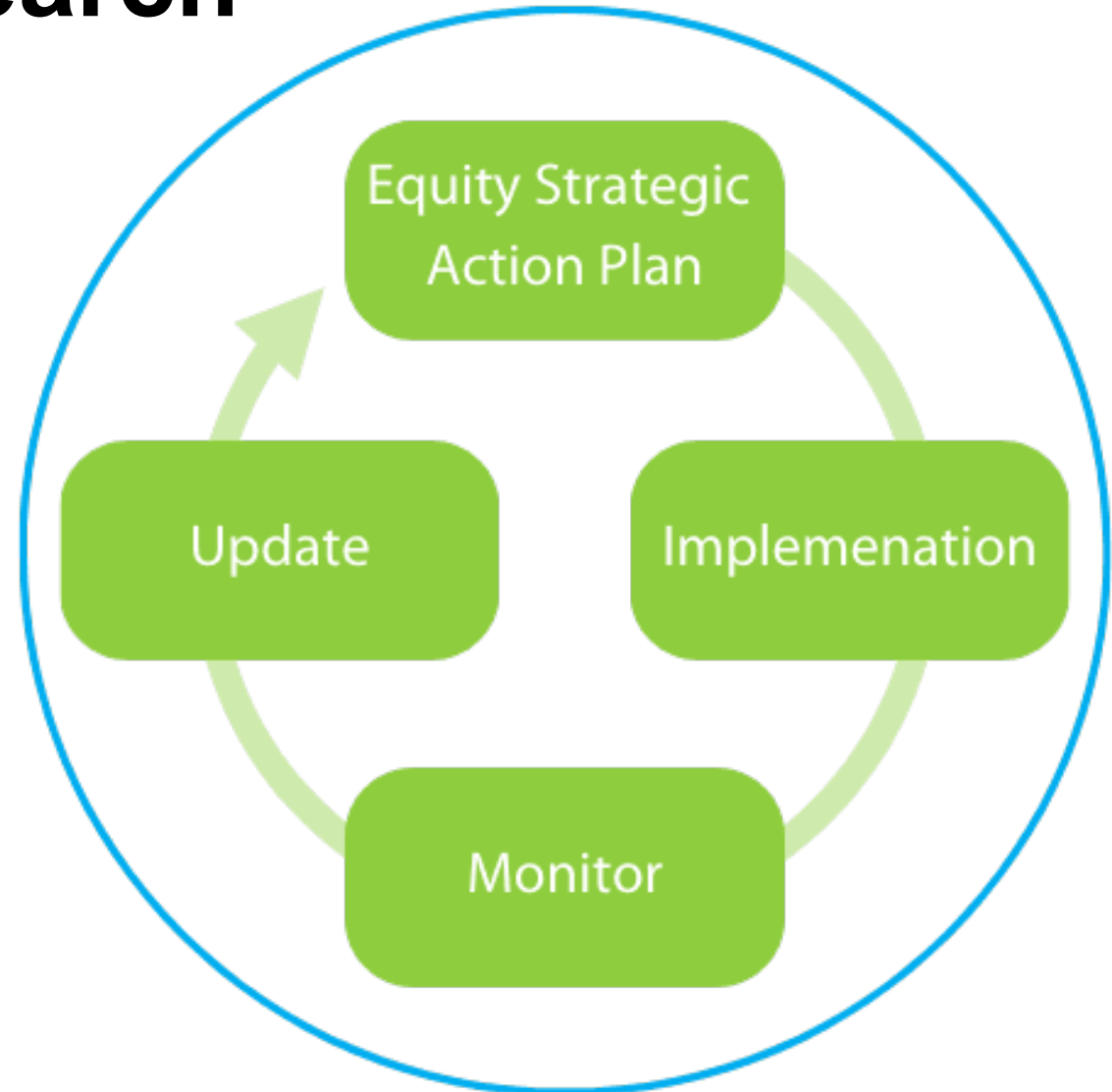


*Numbers represent averages at all centers and may not add up due to rounding (see Table 1, page 8)

Promoting DEIA in Clinical Research

#BeIntentional:

What Question
Are you trying to
Answer??



Examples of Barriers to Cancer Care

Sample Theme	Illustrative Quote
Poverty	<i>...it's probably not about African American is probably about poverty. And the stresses that come with poverty, actually organizing even the schedule in the week, and children and whatever other issues to keep an appointment.</i>
Health Care System	<i>...I say cancer care is kind of set up as a white middle class model which is someone is going to be able to drive you in every day for your chemo and take care of you, and ... no one's thinking about you not getting paid while you're taking chemo You're facing a life threatening illness you need to make sure you manage the system more than you should have to...the system should be taking care of you... From my health center to a teaching hospital and then back to the health center and I'm seeing people get dropped in between the cracks it's a huge barrier...</i>
Fear	<i>...part of it is still the fear factor, they are already afraid The other part is who is going to help them when they</i>
Informational/ Education	<i>Most people it starts at the information level, kind of the big C and no matter what shape or form it is it co</i>
Mistrust	<i>... we know that people are getting paid to do these and none of that money never gets into the commun gets into the community, never benefit in most ways</i>

The Oncologist*

Community Outreach

Perceptions of Cancer Care and Clinical Trials in the Black Community: Implications for Care Coordination Between Oncology and Primary Care Teams

LINDA SPRAGUE MARTINEZ,^{a,b} ELMER R. FREEMAN,^b KAREN M. WINKFIELD^{c,d}

^aBoston University School of Social Work, Boston, Massachusetts, USA; ^bCenter for Community Health Education Research and Service, Inc., Boston, Massachusetts, USA; ^cLazarex-MGH Cancer Care Equity Program, Massachusetts General Hospital, Boston, Massachusetts, USA;

^dDepartment of Radiation Oncology, Wake Forest Baptist Health, Winston-Salem, North Carolina, USA

Disclosures of potential conflicts of interest may be found at the end of this article.

Key Words. Community-engaged assessment • Barriers to cancer care • Cancer clinical trial • Minority clinical trial participation • Interpersonal aspects of cancer care • Cancer disparities

Wake Forest Baptist Health: Population Health Navigation



M. Alejandra Combs, JD
Patient Navigator - Hispanic

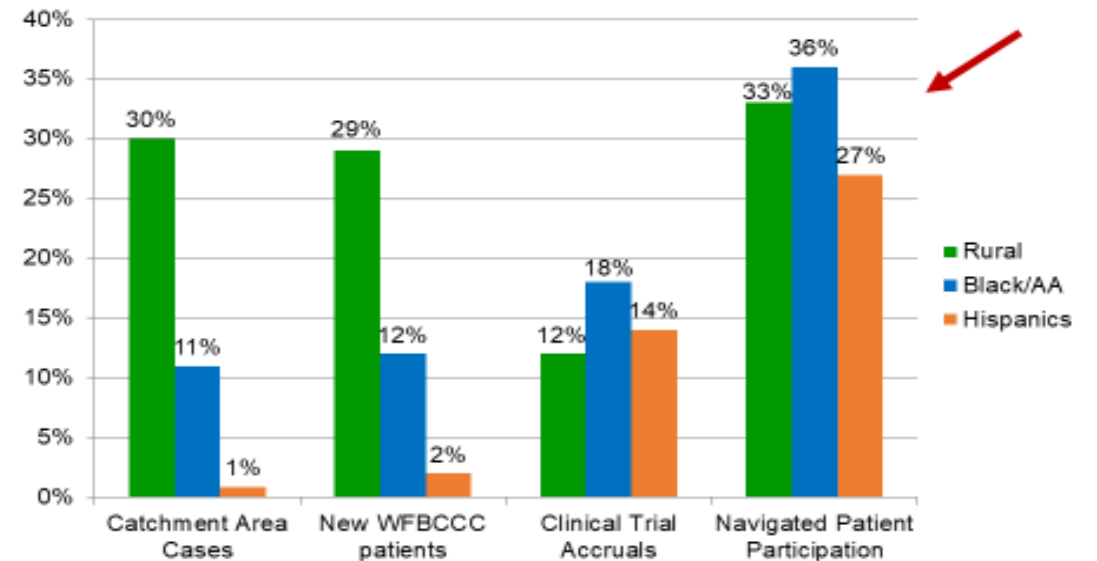


E. Copus, MSW
Patient Navigator- Rural



A. Daniels, MS
Patient Navigator - African

Clinical Trial Participation



Strom C, Copus E, Winkfield K. Mitigating Cancer Disparities Through an Innovative Navigation Program. *North Carolina Medical Journal*. 2024;85(1). [doi:10.18043/001c.91427](https://doi.org/10.18043/001c.91427)

Patient Support Programs

- Population Health Navigation
 - Hispanic African American Rural AYA

\$1.2M Programmatic Funds

\$600K – NCI

\$600K - Foundation

- Cancer Support Groups
- Survivorship Clinic

RSVP: Community Engagement

Partners

Allura USA

American Cancer Society- Wilkes

Care Connection Pharmacy- Wilkes

Novant Oncology Clinic- Wilkes

Seby B. Jones Cancer Center- Watauga

Surry County Health Department

RCCOP Stakeholder Advisory Committee

Tyson Foods

Wilkes County Health Department (FQHC)

Wilkes Multidisciplinary Team

Wilkes Medical Center

Wilkes YMCA- Livestrong

- Environmental scan
- Stakeholder Advisory Committee
- 24 primary care teams
- ACS/Wilkes Relay for Life



Create Access to Targeted Cancer Therapy for -Underserved Populations (CATCH-UP.2020)

(NCI P30 Cancer Center Support Grant Administrative Supplement)



Experimental Therapeutics Clinical Trials Network

Team Driven. Cancer Therapy Focused.

National Cancer Institute at the National Institutes of Health

WFBCCC
CATCH-
UP.2020
Program

\$775,000/yr

- **Establish a Framework for Facilitated Access to ETCTN Trials –**
 - Utilize existing infrastructure
 - Rapidly open ETCTN trials at WFBCCC
 - Engage with oncology providers throughout the network
- **Accrue patients to ETCTN trials**
 - Utilize and refine the program to identify, inform, enroll and follow patients accrued to ETCTN trials
- **Evaluate the CATCH-UP.2020 Program to identify gaps and opportunities –**
 - Assess quantitative and qualitative metrics

WFBCCC Clinical Facilities



Wake Forest Baptist Health – High Point



Wake Forest Baptist Health – Clemmons, NC



Wake Forest Baptist Health – Elkin, NC



Wake Forest Baptist - Advent Health, Hendersonville, NC



Wake Forest Baptist Health – Statesville, NC



Wake Forest Baptist Health – Lexington, NC



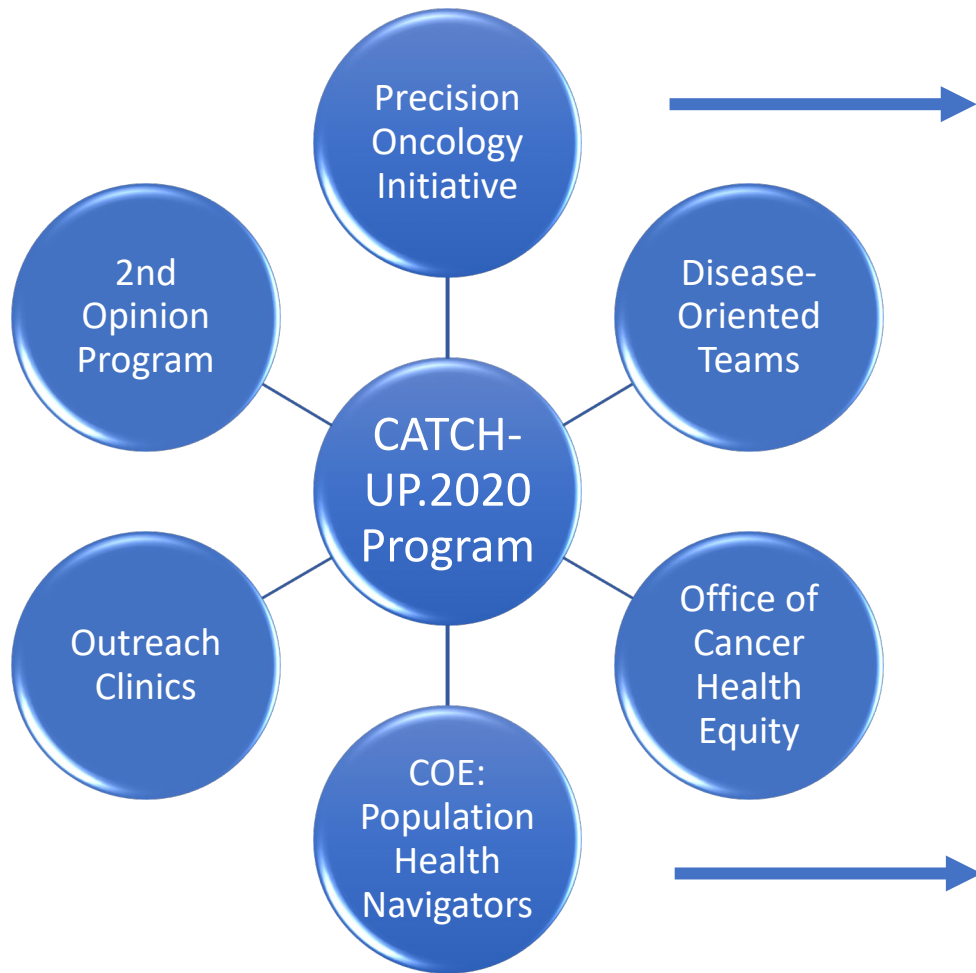
Wake Forest Baptist Health – Mt. Airy, NC



Wake Forest Baptist Health – Wilkes, NC

- VA Medical Centers – Salisbury and Kernersville

WFBCCC Existing Infrastructure Supports CATCH-UP.2020 Program



NGS testing available to all patients at the WFBCCC, regardless of insurance status or ability to pay

- 17 ETCTN trials were selected representing diverse cancer types
- **Exceeded accrual goals by 50%**
- 42.2% of participants were from racial/ethnic minority
- Opened the door to begin accruing to non-ETCTN trials at those sites

Engaging Researchers



**MEHARRY
VANDERBILT**

Alliance

SINCE 1999

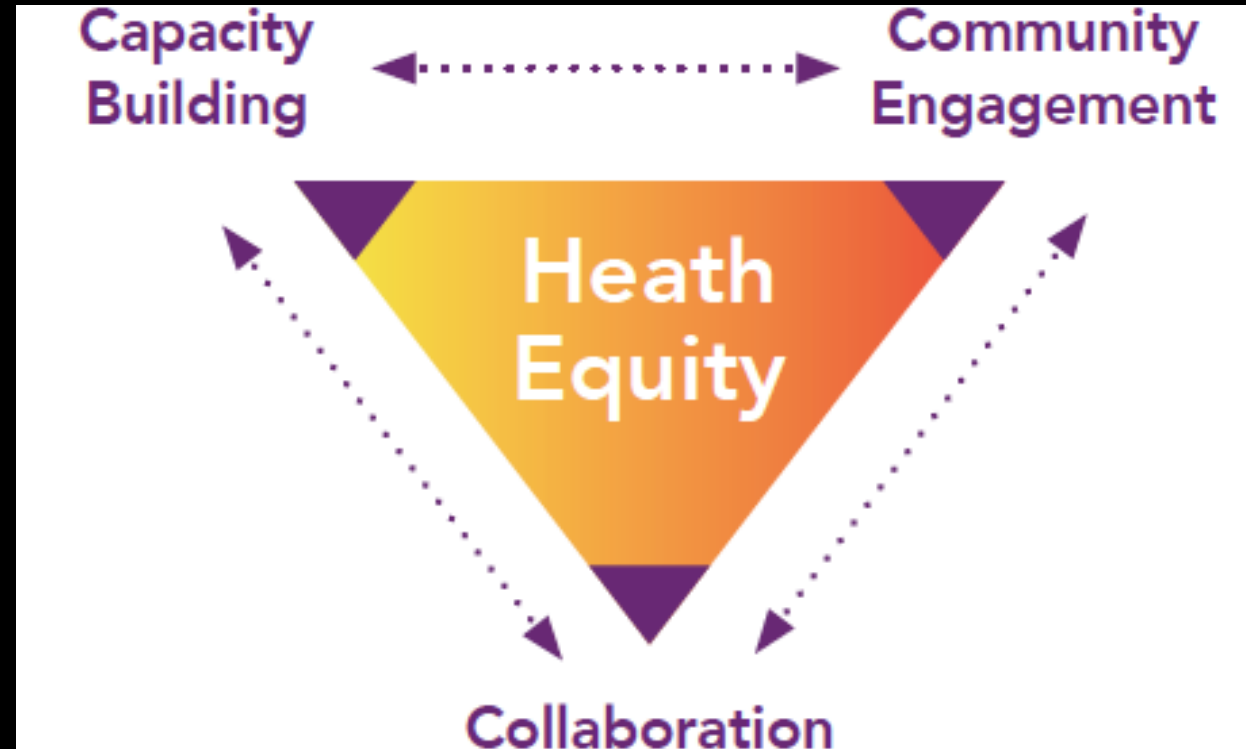


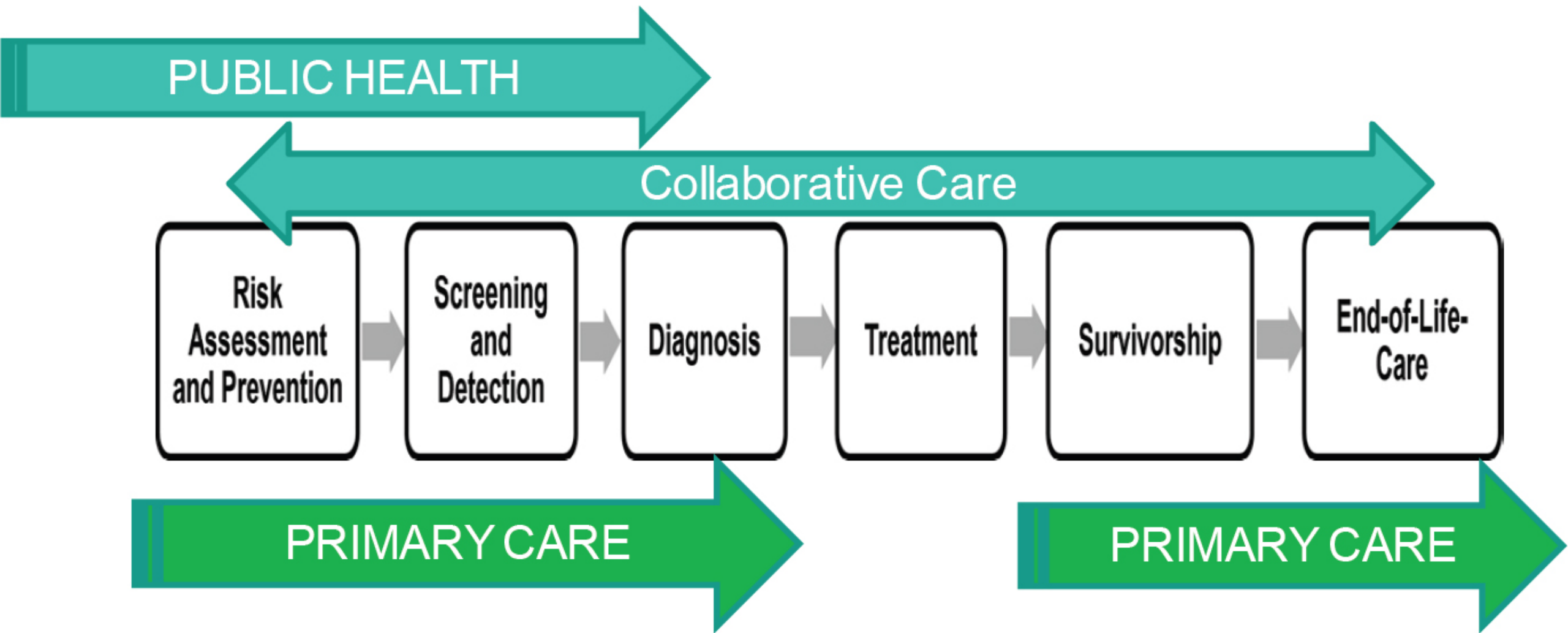
**MEHARRY
VANDERBILT**
Alliance
SINCE 1999

Mission

To enrich learning and advance clinical, translational and basic research focused on ending health disparities by developing and supporting mutually beneficial partnerships between Meharry Medical College, Vanderbilt University Medical Center & the communities they serve.

- Community engagement
- Training and mentoring for trainees & faculty
- Expertise in community engaged research
- Growing external funding
- Purposeful support of health equity and healthcare access for all





Promoting Health Equity in Cancer Care: Proceedings of a Workshop
National Academies of Sciences, Engineering, and Medicine. 2022. Promoting Health Equity in Cancer Care:
Proceedings of a Workshop. Washington, DC: The National Academies Press. <https://doi.org/10.17226/26661>.

Grant Funding



Healthcare Worker Exposure
Response & Outcomes



A program of the National Cancer Institute
of the National Institutes of Health





pcornet[®]

The National Patient-Centered Clinical Research Network

The Engagement Core of the PCORnet Coordinating Center will oversee activities at the national level and help run activities across PCORnet sites. It will aid in the development of strong policies for PCORnet that move the role of stakeholders forward in all PCORnet activities.

Role: Winkfield mPI



\$2.0 Million



SOUTHERN
ENVIRONMENTAL
HEALTH STUDY

- mPIs: Wei Zheng, PhD; Martha Shrubsole, PhD
- **Purpose:** Utilizing a framework of community-engaged research, we will establish a cohort of ~35,000 participants with an extensive collection of survey and geospatial exposure data, as well as biological and environmental samples to understand the role of environmental exposures in the development of cancer.
- Role: Winkfield, Community Engagement Core Co-Lead

\$2.4 Million



MEHARRY-VANDERBILT-TENNESSEE STATE
CANCER PARTNERSHIP

Working Together to Eliminate Cancer Health Disparities

- Role: Winkfield, mPI and Cancer Outreach Core Lead
- **Mission:** Engage and support minority and underserved communities to promote cancer education and awareness, capacity building related to access to and participation in research studies with the goal of reducing cancer disparities in the Partnership catchment area.

\$8.4 Million

Development of an Actionable Framework to Address Cancer Care Disparities in Medically Underserved Populations in the United States: Expert Roundtable Recommendations

Stakeholders who implement this framework.



Health care leaders, patient advocate groups, community outreach leaders, community-based organizations, lay, nurse and clinical navigators, researchers, industry, govt and policy leaders

Medically underserved populations.



Racial/ethnic minority groups, rural populations, aged, adolescent/young adult], LGBTQ, differently-abled, immigrants and refugees, and under and uninsured communities.



Your Advocacy Matters



Awareness

- Get to know the issues
- Understand the social context
- Identify care gaps in your community

Advocacy

- Policy Matters!!
- Resource allocation decisions:
 - Political, economic, and social systems
 - Institutions

Action!!!



**MEHARRY
VANDERBILT**
Alliance
SINCE 1999

Thank you!!

www.drkarenwinkfield.com

3blackdocs.com



@DrWinkfield

@3BlackDocs

podcast



VANDERBILT-INGRAM CANCER CENTER