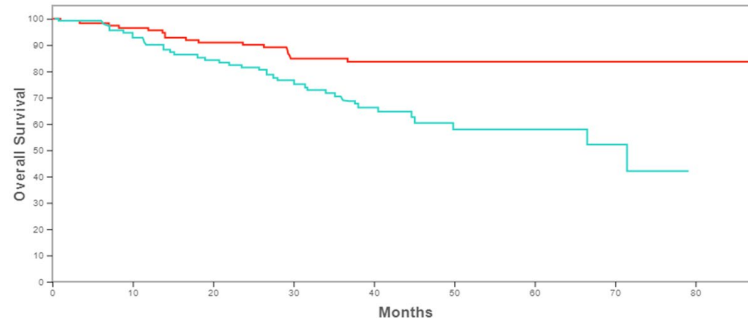


# ADULT ALL – RECENT IMPORTANT RESULTS

- ECOG-ACRIN E1910 – blinatumomab in MRD *negative* ALL



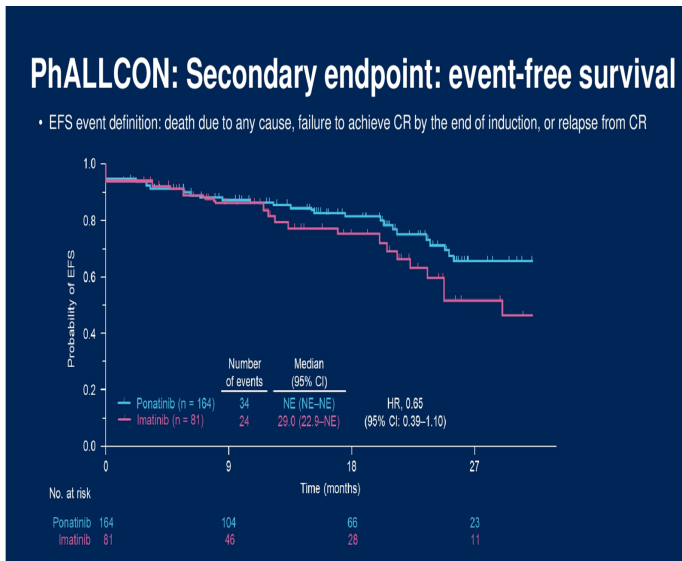
## Questions

Other ALL regimens?

MRD positive ?

- Ph+ ALL

PhALLCON – reduced intensity chemo + imatinib (600mg) or ponatinib (45mg)



## Ponatinib + blinatumomab

EFS ~ 90% w/o transplant *but*,  
N=40, short f/u

*Cardiovascular issues?*  
*Better than dasatinib?*